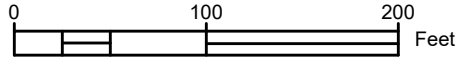


# FINAL PLAT OF WHISPERING OAKS, PHASE 2, SECTION 9 SHEET 1 OF 2



The protective covenants for this plat are recorded in

Instrument # \_\_\_\_\_

THE SUBJECT PROPERTY LIES PARTIALLY WITHIN THE 100 YEAR FLOOD HAZARD ZONE PER F.I.R.M. COMMUNITY PANEL #18019C0190E, EFFECTIVE DATE APRIL 16, 2014. THE ABOVE DETERMINATION IS SUBJECT TO UNCERTAINTIES IN SCALING AND THE SOURCE MAP.

**LEGEND**  
● = #5 REINFORCING BAR WITH YELLOW PLASTIC CAP STAMPED PRIMAVERA & ASSOC. #0049 SET



Curve Table				
CURVE #	ARC	RADIUS	BEARING	CHORD
C1	42.48'	150.00'	S41°51'21"W	42.34'
C2	26.10'	150.00'	S28°45'25"W	26.07'
C3	27.38'	150.00'	S29°00'07"W	27.35'
C4	81.58'	150.00'	S49°48'49"W	80.58'
C5	40.38'	150.00'	S57°40'57"W	40.26'
C6	12.29'	200.00'	S57°31'40"E	12.28'
C7	67.84'	200.00'	S49°34'11"E	67.52'
C8	101.41'	200.00'	N41°43'53"W	100.33'
C9	30.25'	100.00'	N57°08'19"W	30.13'
C10	43.24'	200.00'	S55°49'39"E	43.16'
C11	47.12'	30.00'	S04°58'11"W	42.43'
C12	35.08'	25.00'	N89°49'55"W	32.27'
C13	48.65'	225.00'	N55°49'39"W	48.55'
C14	36.38'	25.00'	S07°56'44"E	33.25'
C15	29.44'	175.00'	S28°55'22"W	29.40'
C16	1.01'	175.00'	S23°56'16"W	1.01'
C17	39.46'	25.00'	S68°59'03"W	35.49'
C18	43.65'	25.00'	S15°47'09"E	38.31'
C19	39.27'	25.00'	S79°13'55"W	35.36'
C20	13.82'	225.00'	N57°31'40"W	13.82'

Curve Table				
CURVE #	ARC	RADIUS	BEARING	CHORD
C21	59.36'	175.00'	N49°34'11"W	59.08'
C22	29.20'	225.00'	S43°34'13"E	29.18'
C23	47.12'	225.00'	S53°17'16"E	47.03'
C24	10.75'	175.00'	S57°31'40"E	10.75'
C25	49.79'	25.00'	S01°17'16"W	41.96'
C26	15.38'	125.00'	S61°52'10"W	15.37'
C27	7.49'	175.00'	S64°10'09"W	7.49'
C28	39.63'	175.00'	S56°27'24"W	39.54'
C29	47.12'	30.00'	N85°01'49"W	42.43'
C30	47.12'	30.00'	N04°58'11"E	42.43'
C31	33.65'	125.00'	N57°40'57"E	33.55'
C32	67.50'	175.00'	N54°20'40"E	67.09'
C33	13.87'	175.00'	N41°01'27"E	13.86'
C34	13.81'	175.00'	N36°29'35"E	13.81'
C35	38.32'	25.00'	N78°08'32"E	34.68'
C36	5.67'	175.00'	S57°01'09"E	5.67'
C37	88.23'	175.00'	S41°38'53"E	87.29'
C38	41.20'	175.00'	S20°27'40"E	41.10'
C39	57.52'	225.00'	N48°56'05"W	57.36'
C40	39.48'	25.00'	N11°00'47"W	35.51'

Curve Table				
CURVE #	ARC	RADIUS	BEARING	CHORD
C41	34.89'	25.00'	N74°12'51"E	32.13'
C42	37.81'	125.00'	N57°08'19"W	37.66'
C43	39.08'	25.00'	N21°00'57"W	35.22'
C44	21.75'	125.00'	N28°45'25"E	21.72'
C45	1.13'	125.00'	N34°00'07"E	1.13'
C46	34.27'	125.00'	N42°06'57"E	34.16'
C47	47.12'	30.00'	S85°01'49"E	42.43'
C190	37.84'	175.00'	S55°49'39"E	37.76'

**ENGINEER/SURVEYOR:**  
JASON M. COPPERWAITE  
PAUL PRIMAVERA & ASSOCIATES  
301 E. CHESTNUT STREET  
CORYDON, IN 47112  
(812) 738-4124

**OWNER/APPLICANT:**  
WOII DEVELOPMENT, LLC  
5501 RAIN TREE RIDGE  
JEFFERSONVILLE, IN 47130